



Activity Overview

This educational activity will review the etiology and epidemiology of obesity, as well as prominent unmet needs and barriers to treatment optimization as a means of providing foundational context for learners. Expert faculty will then lead attendees on an immersive, deep dive through the established paradigm and the preponderance of emerging data for novel weight-loss therapeutics, most notably the GLP-1 agonists and the GLP-1/GIP agonists. The session will conclude with a case-based segment, in which attendees will get to apply the principles they have learned to real-world clinical scenarios, address practical weight-loss challenges, and highlight the instrumental role of the primary care physician as a gatekeeper for the obesity management team.

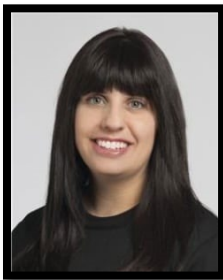
Learning Objectives

1. Review the etiology and epidemiology of obesity, highlighting guideline-directed recommendations for obesity management and the historical stigmatization of weight-loss pharmacotherapies.
2. Appraise currently FDA-approved medications for obesity management and the evolving evidentiary base for novel therapies, highlighting comparative safety and efficacy profiles and mechanisms of action.
3. Examine the two newest approvals for GLP-1 agonists in this treatment landscape and compare clinical utility as assessed by recently conducted head-to-head trials.
4. Discuss recently reported trial data evaluating GLP-1/GIP agonism as a novel pharmacologic mechanism for weight management, and evaluate its potential placement within the evolving calculus.
5. Use real-world, case-based scenarios to formulate patient-centric treatment plans by integrating knowledge of barriers to care, clinical efficacy of established and emerging pharmacotherapies, and tools to assist primary care physicians with front-line obesity management and multidisciplinary referral.

Agenda

6:30-6:35 PM	Introductions/Pre-test questions
6:35-6:45 PM	Laying the Foundation in Obesity Management: Etiology, Epidemiology, and the Urgent Need for Change
6:45-7:05 PM	Novel Approaches, Novel Outcomes: A Deep Dive into the Expanding Pharmacologic Weight-loss Armamentarium
7:05-7:20 PM	Fortifying the Frontline: Primary Care Physicians as Gatekeepers in the Obesity Management Paradigm
7:20-7:30 PM	Questions with Faculty/Post-test questions

Faculty



Yael Mauer, MD, MPH
Department of Internal Medicine and Geriatrics
Cleveland Clinic
Cleveland, OH

Faculty Disclosures

It is the policy of Creative Educational Concepts, LLC, (CEC) to ensure independence, balance, objectivity, and scientific rigor and integrity in all their CME/CE activities. Activity planners, faculty, peer reviewers, and CEC staff must disclose to the participants any relationships with ineligible entities whose products or devices may be mentioned in this CE activity, or with the commercial supporter of this CE activity. An ineligible entity is defined as any entity producing, marketing, re-selling, or distributing health care goods or services consumed by, or used on, patients. Financial relationships may include research grants, consultant fees, travel, advisory boards, consultancy, speakers' bureaus, other benefits, or having a self-managed equity interest in a company.

CEC has evaluated, identified, and mitigated any potential conflicts of interest through a rigorous content validation procedure, use of evidence-based data/research, and a multidisciplinary peer review process. The following information is for participant information only. It is not assumed that these relationships will have a negative impact on the presentations.

Planner/Faculty

Yael Mauer, MD, MPH—has no relevant financial relationships to disclose in relation to the content of this activity.

Peer Reviewer

Wei Zhang, MD PhD MS—has no relevant financial relationships to disclose in relation to the content of this activity.

CEC Staff/Planners

Erin Spencer, PharmD—has no relevant financial relationships to disclose in relation to the content of this activity.

Ashley C. Lilly, MHA—has no relevant financial relationships to disclose in relation to the content of this activity.

Faculty of this CME/CE activity may include discussions of products or devices that are not currently labeled for use by the FDA. The faculty have been informed of their responsibility to disclose to the audience if they will be discussing off-label or investigational uses (any uses not approved by the FDA) of products or devices. CEC, the faculty, and any commercial supporter of this activity do not endorse the use of any product outside of the FDA labeled indications. Medical professionals should not utilize the procedures, products, or diagnosis techniques discussed during this activity without evaluation of their patient for contraindications or dangers of use.

Accreditation



In support of improving patient care, Creative Educational Concepts is jointly accredited by the Accreditation Council for Continuing Medical Education (ACCME), the Accreditation Council for Pharmacy Education (ACPE), and the American Nurses Credentialing Center (ANCC), to provide continuing education for the healthcare team

Medicine (ACCME):

CEC designates this live educational activity for a maximum of 1.0 *AMA PRA Category Credits*[™]. Physicians should claim only the credit commensurate with the extent of their participation in the activity.

AAFP Credit

The AAFP has reviewed Primary Care Perspectives on Obesity: Embracing Novel Agents to Optimize Patient Outcomes and deemed it acceptable for up to 1.00 Live AAFP Elective credits. Term of Approval is from 01/30/2023 to 11/30/2023. Physicians should claim only the credit commensurate with the extent of their participation in the activity.

PRESENTED BY

Creative Educational Concepts, LLC



Supported by an independent educational grant from Lilly